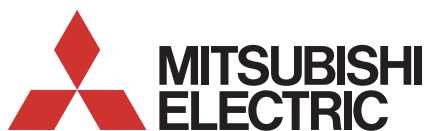




Lossnay Mechanical Ventilation Heat Recovery (MVHR) systems, are designed to supply fresh air into any commercial building whilst simultaneously extracting stale air and, most importantly, recovering valuable heat energy for maximum efficiency

Key Features

- Clean fresh air
- Improved air quality and comfort
- Increased climate control
- Reduced energy bills
- Energy efficient heat recovery
- Significantly reduced power consumption and SFP's
- Free cooling function
- Total heat exchange (sensible and latent)

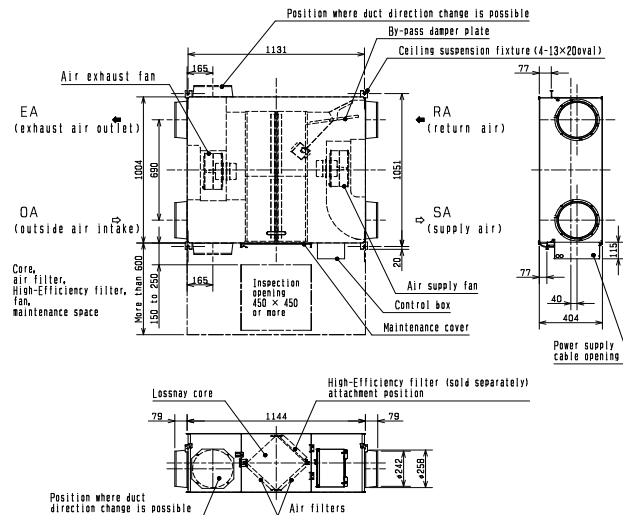


Air Conditioning | Heating
Ventilation | Controls



COMMERCIAL MODELS		LGH-80RVX-E
ELECTRICAL POWER SUPPLY		220-240V, 50Hz
RUNNING CURRENT (A)		SP1 0.15 SP2 0.36 SP3 0.83 SP4 1.82
INPUT POWER (W)		SP1 18 SP2 60 SP3 151 SP4 335
AIRFLOW (m ³ /h) ²		SP1 200 SP2 400 SP3 600 SP4 800
AIRFLOW (l/s) ²		SP1 56 SP2 111 SP3 167 SP4 222
SPECIFIC FAN POWER (W/(l/s))		SP1 0.32 SP2 0.54 SP3 0.90 SP4 1.51
EXTERNAL STATIC PRESSURE (Pa)		SP1 10 SP2 38 SP3 85 SP4 150
SOUND PRESSURE LEVEL (dBA)		SP1 18 SP2 23 SP3 30 SP4 34.5
TEMPERATURE EXCHANGE EFFICIENCY (%)		SP1 85 SP2 84 SP3 82.5 SP4 79
ENTHALPY EXCHANGE EFFICIENCY (%)	Heating	SP1 81 SP2 78 SP3 73.5 SP4 71
	Cooling	SP1 81 SP2 78 SP3 72.5 SP4 70
WEIGHT (kg)		48
DIMENSIONS (mm) Width x Depth x Height		1144 x 1004 x 404
DUCT SIZE (mm)		250
STANDARD FILTER ¹		EU-G3
FUSE RATING (BS88) – HRC (A)		6

DIMENSIONS



REMOTE CONTROLLER

PZ-61DR-E



- Control up to 15 Lossnay units
- Full-dot backlit LCD screen
- Weekly timer (ability to pre-set air volume requirements at different intervals)
- Night purge function



Notes: Running Current, Input Power and Recovery Efficiency are based on the above airflow rate, power supply 240V, 50Hz. Sound Pressure Level measured at 1.5m under the centre of panel. *1: EU-F7 filter available as optional parts. *2: Airflow tested to Japan industrial standard JIS B 8628. SP1, SP2, SP3 & SP4 relate to the fan speeds of the Lossnay RVX units i.e. fanspeed 1, 2, 3 & 4.

Lossnay Housings are also available, please contact Mitsubishi Electric for further information.